

# INDUSTRIAL SPACE FOR LEASE

“Gateway Business Center”

2003-2053 Preisker Lane, Santa Maria, CA



## Property Details

- Zoning: PD-CM
- Power: 200 Amp Service Available
- Construction: Concrete Tilt-Up
- Ceiling Height: 13 Feet
- Roll-Up Doors: 8' x 10', 10' x 10'
- Fully Equipped with Fire Sprinklers
- Prominent Tenant Signage Available
- Directory Tenant Signage Provided

Excellent location with easy access to U.S. Highway 101. Offers a well conceived traffic plan, providing ample customer, employee, and delivery parking. Customized for your business needs. Up to 40% office within each unit. Allowable uses include commercial, manufacturing, warehousing, and wholesale distribution. See next page for available spaces.



**Jerry Schmidt**

805.928.2800, ext. 107  
Jerry@PacificaRCRE.com  
BRE#00956042

**Pat Palangi**

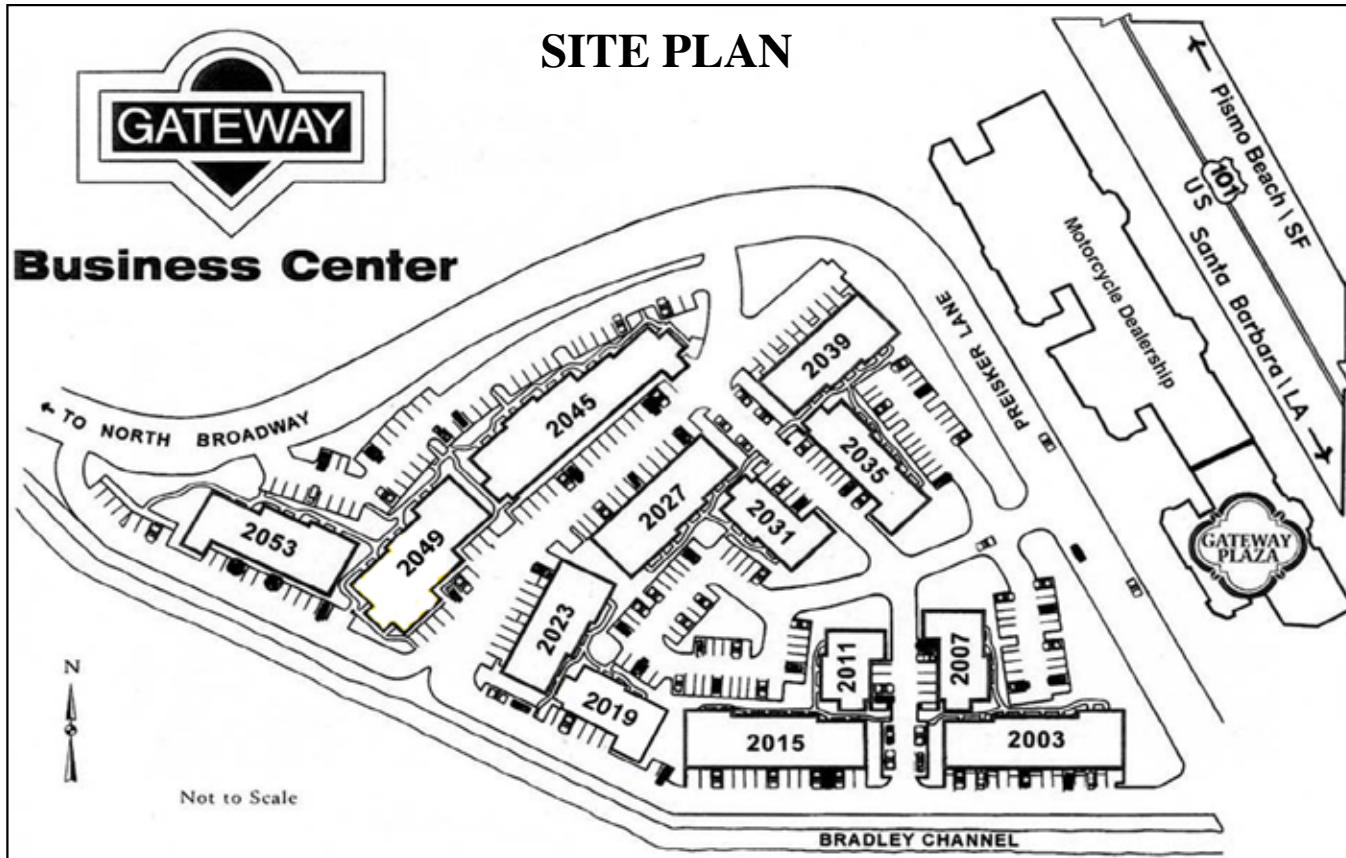
805.928.2800, ext. 105  
Pat@PacificaCRE.com  
BRE#01108680

**Mike Kelly**

805.928.2800, ext. 113  
Mike@PacificaCRE.com  
BRE#01800988

2520 Professional Parkway Santa Maria, CA 93455 • Office: (805) 928-2800 Fax: (805) 349-9375 • [www.PacificaSantaMaria.com](http://www.PacificaSantaMaria.com)

Information contained herein has been obtained from the owner of the property or from other sources deemed reliable. We have no reason to doubt its accuracy, but we do not guarantee it.



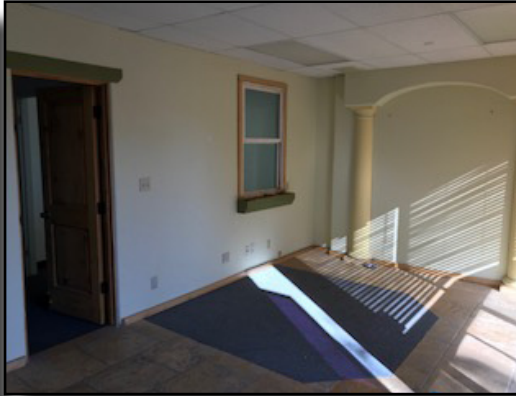
Available

**Currently Available**

<u>Address</u>	<u>SF</u>	<u>Price/SF</u> (3yr Term)	<u>Type</u>
2007 Preisker Lane, Suite B	±904	\$0.73	NNN (\$0.22)
2015 Preisker Lane, Suite A	±1,028	\$0.71	NNN (\$0.22)



Information contained herein has been obtained from the owner of the property or from other sources deemed reliable. We have no reason to doubt its accuracy, but we do not guarantee it.



**PACIFICA**  
COMMERCIAL REALTY



**The Towbes Group**

Information contained herein has been obtained from the owner of the property or from other sources deemed reliable. We have no reason to doubt its accuracy, but we do not guarantee it.