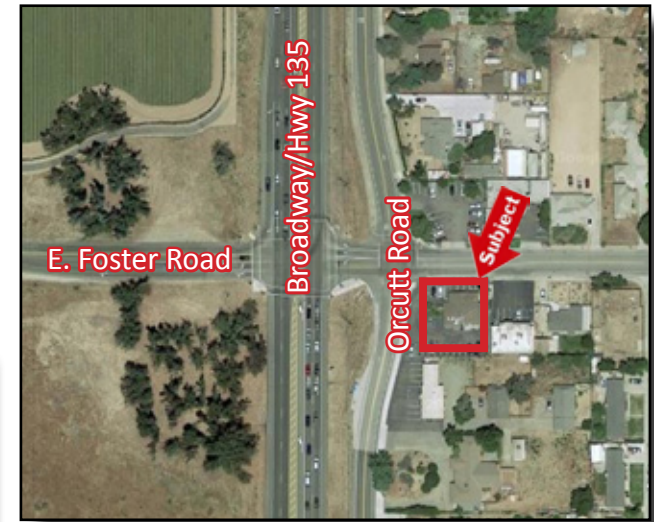


# RESTAURANT/COMMERCIAL BUILDING FOR SALE

120 E. Foster Road  
Orcutt, CA 93455



## Property Details

- Price: \$495,000.00
- ±2,500 Restaurant
- Zoning: Commercial - SB County
- ±10,454 SF Corner Parcel

Restaurant/Commercial Building on corner lot on Foster Road and S. Broadway (State Route 135). Rare opportunity to own commercial property in supply constrained Orcutt, CA. Ideal for investor or owner user. (Please do not disturb tenant)



**Pat Palangi**

805.928.2800, ext. 105

Pat@PacificaCRE.com

BRE# 01108680

**Jerry Schmidt**

805.928.2800, ext. 107

Jerry@PacificaCRE.com

BRE# 00956042

**Mike Kelly**

805.928.2800, ext. 113

Mike@PacificaCRE.com

BRE# 01800988

2520 Professional Parkway, Santa Maria, CA 93455 • Office: (805) 928-2800 Fax: (805) 349-9375 • [www.pacificasantamaria.com](http://www.pacificasantamaria.com)

Information contained herein has been obtained from the owner of the property or from other sources deemed reliable. We have no reason to doubt its accuracy, but we do not guarantee it.