

INDUSTRIAL BUILDING - AVAILABLE

2602 Airpark Drive
Santa Maria, CA



Property Details:

- Building Size: +/- 18,685 SF
- Construction: Concrete Tilt-Up
- Extensive Office Tenant Improvement
- 1,200 amps/3 phase power
- Zoning: MI - Light Industrial
- Loading: Grade Level

Lease Details:

- Price: \$0.90/Month, NNN
- Term: Five Years
- Available: After June 1, 2017

Highly visible, free-standing Industrial Building within Santa Maria's FairSky Technology Park. Highest quality construction with manufacturing and office amenities. Located close to Santa Maria Airport and convenient to Highway 101. Also for sale.



Jerry Schmidt
805.928.2800, ext. 107
Jerry@PacificaCRE.com
BRE# 00956042

Pat Palangi
805.928.2800, ext. 105
Pat@PacificaCRE.com
BRE# 01108680

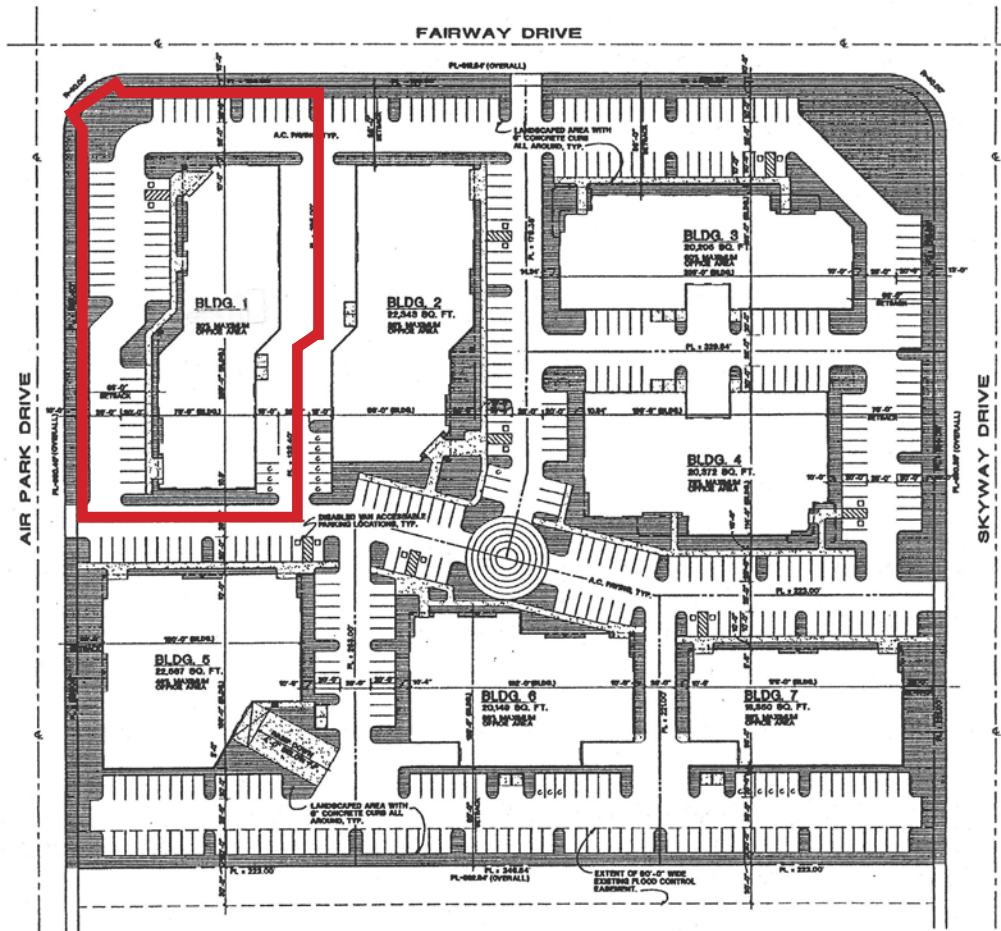
Mike Kelly
805.928.2800, ext. 113
Mike@PacificaCRE.com
BRE# 01800988

2520 Professional Parkway, Santa Maria, CA 93455 • Office: (805) 928-2800 Fax: (805) 349-9375 • www.pacificasantamaria.com

Information contained herein has been obtained from the owner of the property or from other sources deemed reliable. We have no reason to doubt its accuracy, but we do not guarantee it.

SITE SUMMARY:

LAND AREA = 436,127 SQ. FT.
(10.01 ACRES)
BUILDINGS AREA = 142,005 SQ. FT.
(32.56% COVERAGE)
PAVED AREA = 308,407 SQ. FT.
(47.79% COVERAGE)
LANDSCAPED AREA = 85,715 SQ. FT.
(19.65% COVERAGE)
ZONE: M-1
NOTE: ALL BUILDINGS ARE CONCRETE
TILT-UP FOR INDUSTRIAL USE.
NOTE: ALL MAXIMUM OFFICE AREA'S ARE BASED ON
1250 P.S.F. RATIO FOR OFFICE
1500 P.S.F. RATIO FOR MANUFACTURING / WAREHOUSE



REVISIONS	BY

FAIRSKY COMMERCE CENTER
SITE PLAN

BUILDING DESIGN ASSOCIATES, INC.
6705 CORIE LANE
WEST HILLS, CA. 91307
PHONE: (818) 864-1721 FAX: (818) 862-9543

DRAWN	JSH
CHECKED	
DATE	
SCALE	AS SHOWN
JOB NO.	
SHEET	
OF SHEETS	



Jerry Schmidt
805.928.2800, ext. 107
Jerry@PacificaCRE.com
BRE# 00956042

Pat Palangi
805.928.2800, ext. 105
Pat@PacificaCRE.com
BRE# 01108680

Mike Kelly
805.928.2800, ext. 113
Mike@PacificaCRE.com
BRE# 01800988

2520 Professional Parkway, Santa Maria, CA 93455 • Office: (805) 928-2800 Fax: (805) 349-9375 • www.pacificasantamaria.com

Information contained herein has been obtained from the owner of the property or from other sources deemed reliable. We have no reason to doubt its accuracy, but we do not guarantee it.