

**FOR SALE**

**US HWY 101 & Tefft Street, Nipomo, CA | Land | ±11 acres**



**PACIFICA**  
COMMERCIAL REALTY

**Gerald Jankowski**

805.928.2800, ext. 106

Gerald@PacificaCRE.com

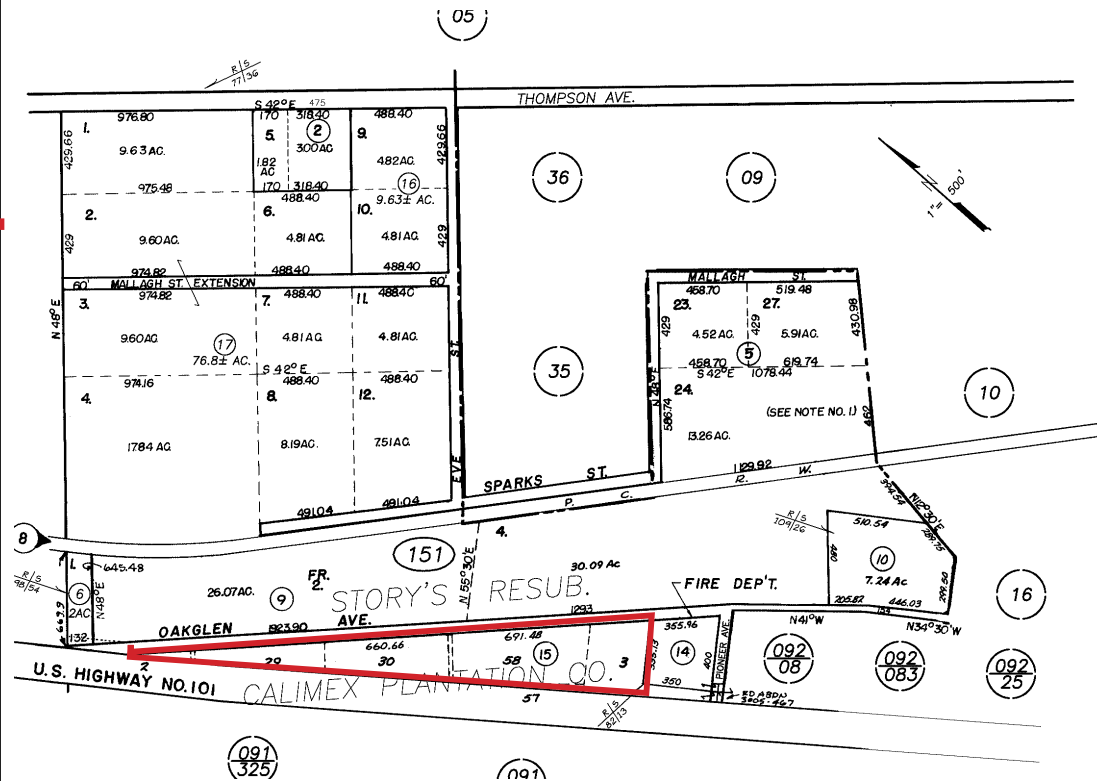
BRE #00791658

2520 Professional Parkway, Santa Maria, CA 93455 • Office: (805) 928-2800 Fax: (805) 349-9375 • [www.PacificaSantaMaria.com](http://www.PacificaSantaMaria.com)

Information contained herein has been obtained from the owner of the property or from other sources deemed reliable. We have no reason to doubt its accuracy, but we do not guarantee it.

FOR SALE

US HWY 101 & Tefft Street, Nipomo, CA | Land | ±11 acres



Located in San Luis Obispo County, approximately 11 acres of Commercial Land along Highway 101. Great visibility and frontage from the 101 Highway the property is located between Tefft Street and Willow Roads, north and southbound, on and off ramp. Sophisticated Seller would allow the buyer time to achieve entitlements and zoning, if necessary. Very desirable school district, excellent shopping and restaurants nearby and world famous golf courses, all in close proximity.

### Sale Details

- Asking Price: \$5,749,000.00

### Property Details

- Zoning: Commercial
- 



**Gerald Jankowski**  
805.928.2800, ext. 106  
Gerald@PacificaCRE.com  
BRE #00791658

2520 Professional Parkway, Santa Maria, CA 93455 • Office: (805) 928-2800 Fax: (805) 349-9375 • www.PacificaSantaMaria.com

Information contained herein has been obtained from the owner of the property or from other sources deemed reliable. We have no reason to doubt its accuracy, but we do not guarantee it.