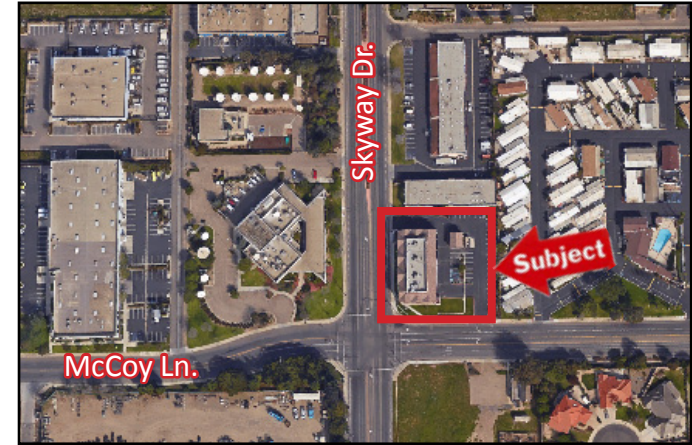


INDUSTRIAL/OFFICE SUITES FOR LEASE

2370 Skyway Drive, Santa Maria, CA



Property Details

- Building Size: ±14,000 SF
- Land Area: ±0.98 Acres (±42,636 SF)
- Zoning: PD-M1 (Light Manufacturing)
- Parking: Private Lot
- APN: 111-051-024

Available Spaces

Suite	Square Footage	Monthly Rate
Suite 202 (upstairs)	±1,950 SF	\$1.25/SF Gross
Suite 203 (upstairs)	±1,950 SF	\$1.25/SF Gross
Suite 202/203	±3,900 SF	\$1.25/SF Gross

Recently constructed “flex” office building at the high traffic intersection of Skyway Drive and McCoy Lane. This two-story building is currently divided into four (4) separate suites with one suite leased and two others in “turn-key” condition and ready for immediate occupancy. Landlord is in the process of building out the fourth suite. Each suite has it’s own storage area accessible by a roll-up door that can be utilized for parking or other uses.



Mike Kelly

805.928.2800, ext. 113
Mike@PacificaCRE.com
BRE#01800988

Pat Palangi

805.928.2800, ext. 105
Pat@PacificaCRE.com
BRE#01108680

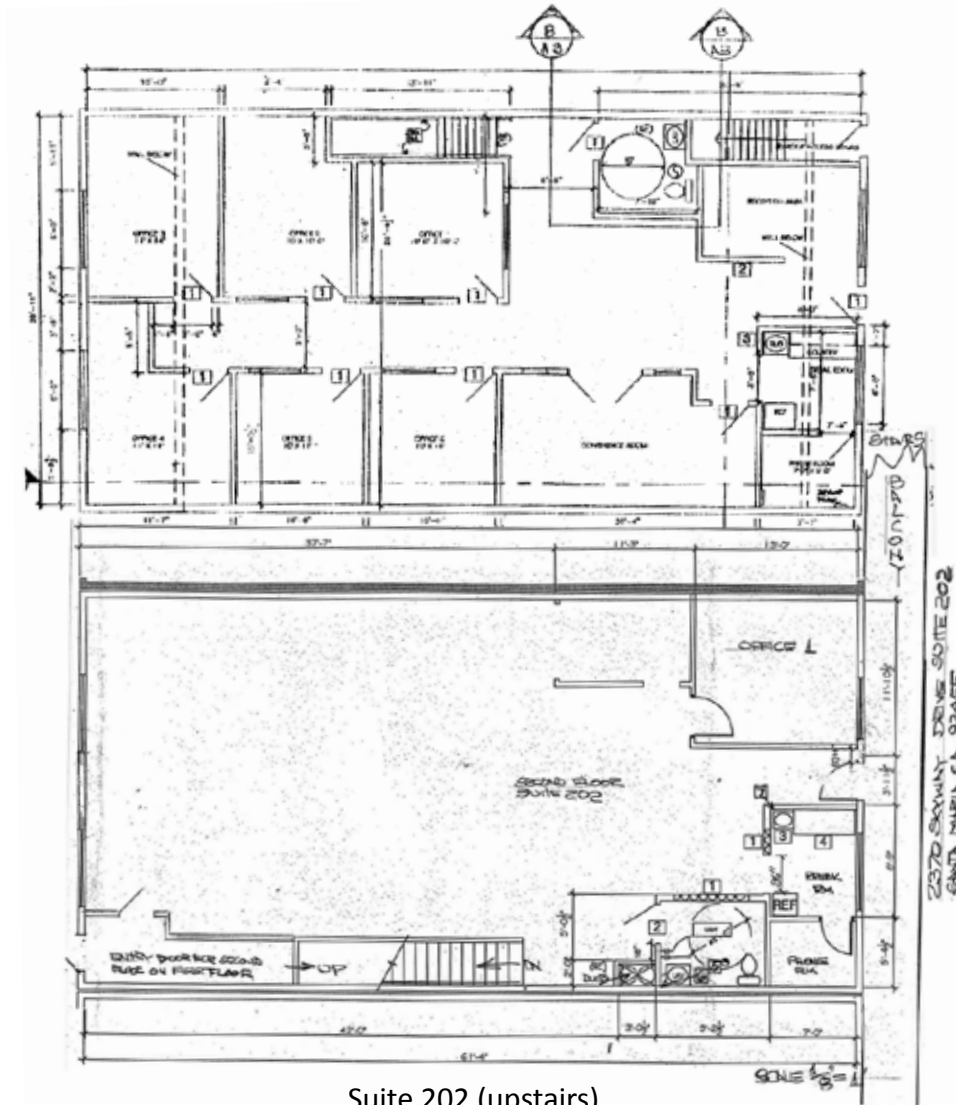
Jerry Schmidt

805.928.2800, ext. 107
Jerry@PacificaCRE.com
BRE#00956042

2520 Professional Parkway Santa Maria, CA 93455 • Office: (805) 928-2800 Fax: (805) 349-9375 • www.pacificasantamaria.com

Information contained herein has been obtained from the owner of the property or from other sources deemed reliable. We have no reason to doubt its accuracy, but we do not guarantee it.

Suite. 203 (upstairs)
±1,950 SF



Suite 202 (upstairs)
±1,950 SF



Jerry Schmidt

805.928.2800, ext. 107

Jerry@PacificaCRE.com

BRE#00956042

Pat Palangi

805.928.2800, ext. 105

Pat@PacificaCRE.com

BRE#01108680

Mike Kelly

805.928.2800, ext. 113

Mike@PacificaCRE.com

BRE#01800988

2520 Professional Parkway Santa Maria, CA 93455 • Office: (805) 928-2800 Fax: (805) 349-9375 • www.pacificasantamaria.com

Information contained herein has been obtained from the owner of the property or from other sources deemed reliable. We have no reason to doubt its accuracy, but we do not guarantee it.