

OFFICE SUITES FOR LEASE

200 S. Thirteenth Street, Grover Beach



Plaza Pacifica

Modern three story mixed-use complex strategically located in Grover Beach in the heart of the Central Coast Five Cities area. Existing suites are pre-wired for telephone. Exterior is newly painted. Nice landscaping. Professional tenant mix. Easy access to Highway 101.

Available Units For Lease

Suite	Size ±
101/102	612 - 809 - 1,421 SF
108	809 SF
209	1,119 SF

Lease Details

- Starting at \$0.95/SF/Month, NNN
- Term: Negotiable

Property Details

- Building Size: 35,500 SF
- Suite Sizes: 613-1,421 SF
- Year Built: 1982
- Parking: On-Site / 100+ Spaces
- Elevator: Yes (Handicap Access)
- Restrooms: Private & Common Area
- Some units have ocean views
- Several windows provide natural sunlight

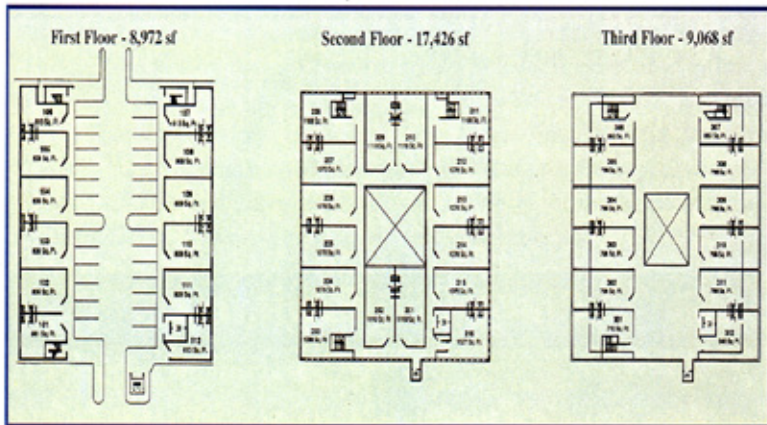


Mike Kelly
(805)928-2800 ext. 113
Mike@PacificaCRE.com
BRE# 01800988

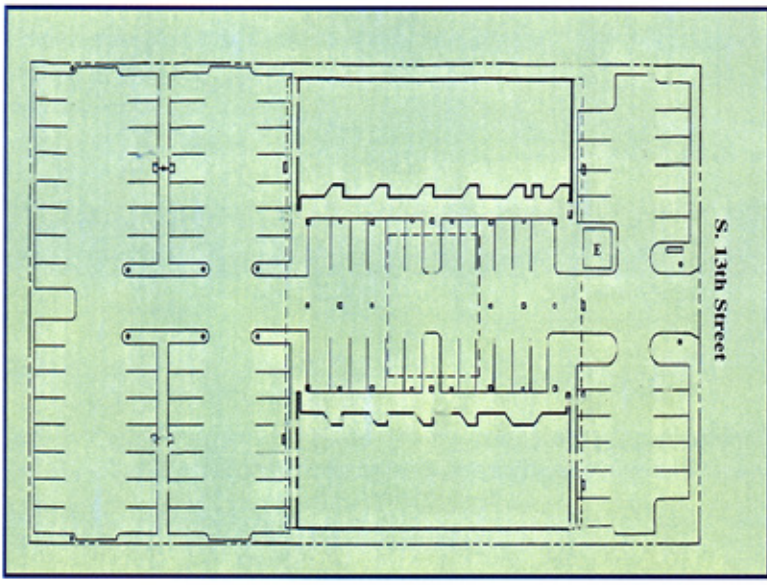
2520 Professional Parkway Santa Maria, CA 93455 • Office: (805) 928-2800 Fax: (805) 349-9375 • www.PacificaSantaMaria.com

Information contained herein has been obtained from the owner of the property or from other sources deemed reliable. We have no reason to doubt its accuracy, but we do not guarantee it.

FLOOR PLANS



SITE PLAN



PACIFICA
COMMERCIAL REALTY