

INDUSTRIAL BUILDING FOR SUBLEASE

155 Cuyama Lane, Nipomo, CA

Motivated Sublessor



Industrial building with fenced yard area conveniently located at the intersection of Highway 101 and Highway 166. Includes \pm 30% office with HVAC.



Lease Details

- Rate: \$7,000.00/Month, Gross (Negotiable)
- Term: Through June 30, 2019
(ask agent regarding longer term)

Property Details

- Building Size: \pm 6,000 SF (approximately 30% office)
- Land Size: \pm 29,000 SF
- Fenced Yard
- HVAC in office area
- APN: 090-302-004; 005



Mike Kelly

805.928.2800, ext. 113
Mike@PacificaCRE.com
BRE: 01800988

Jerry Schmidt

805.928.2800, ext. 107
Jerry@PacificaCRE.com
BRE: 00956042

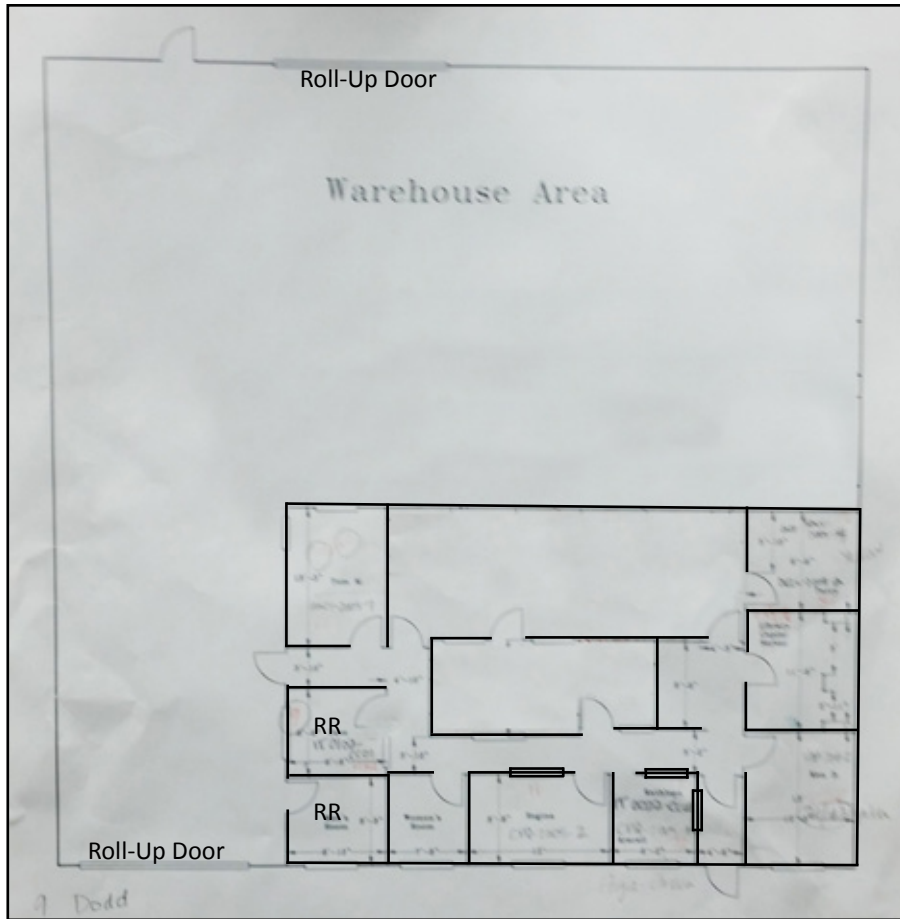
Pat Palangi

805.928.2800, ext. 105
Pat@PacificaCRE.com
BRE: 01108680

2520 Professional Parkway Santa Maria, CA 93455 • Office: (805) 928-2800 Fax: (805) 349-9375 • www.pacificasantamaria.com

Information contained herein has been obtained from the owner of the property or from other sources deemed reliable. We have no reason to doubt its accuracy, but we do not guarantee it.

Floor Plan



Mike Kelly

805.928.2800, ext. 113
Mike@PacificaCRE.com
BRE: 01800988

Jerry Schmidt

805.928.2800, ext. 107
Jerry@PacificaCRE.com
BRE: 00956042

Pat Palangi

805.928.2800, ext. 105
Pat@PacificaCRE.com
BRE: 01108680

2520 Professional Parkway Santa Maria, CA 93455 • Office: (805) 928-2800 Fax: (805) 349-9375 • www.pacificasantamaria.com

Information contained herein has been obtained from the owner of the property or from other sources deemed reliable. We have no reason to doubt its accuracy, but we do not guarantee it.