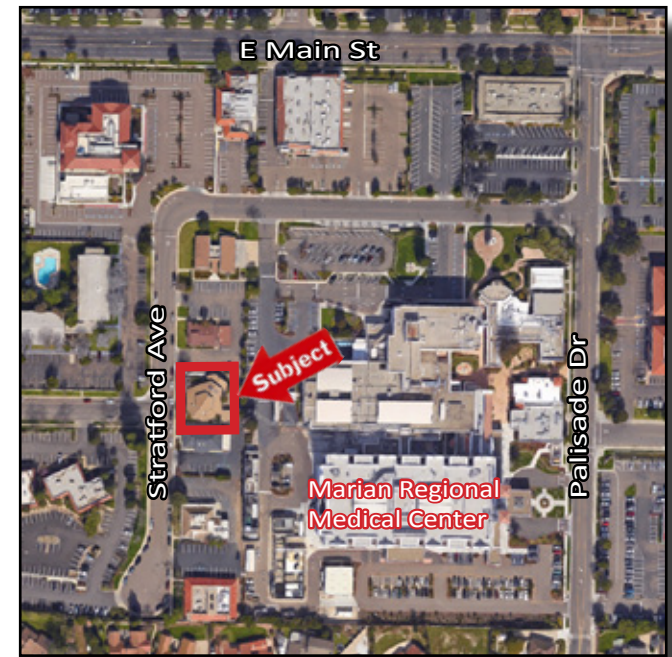


Medical Office Building For Sale

224 South Stratford Ave

Santa Maria, CA



Free-Standing medical office building located immediately adjacent to Marian Regional Medical Center. This is the first time to market for this versatile building that is currently divided for two practices with a common waiting area.

Property Details

- Sale Price: \$1,250,000.00
- Building Size: ±3,800 SF
- Parcel Size: ±14,810 SF
- APN: 128-120-021
- Year Built: ±1979

Jerry Schmidt

805.928.2800, ext. 107
Jerry@PacificaCRE.com

BRE- 00956042

Mike Kelly

805.928.2800, ext. 113
Mike@PacificaCRE.com

BRE- 01800988

Pat Palangi

805.928.2800, ext. 105
Pat@PacificaCRE.com

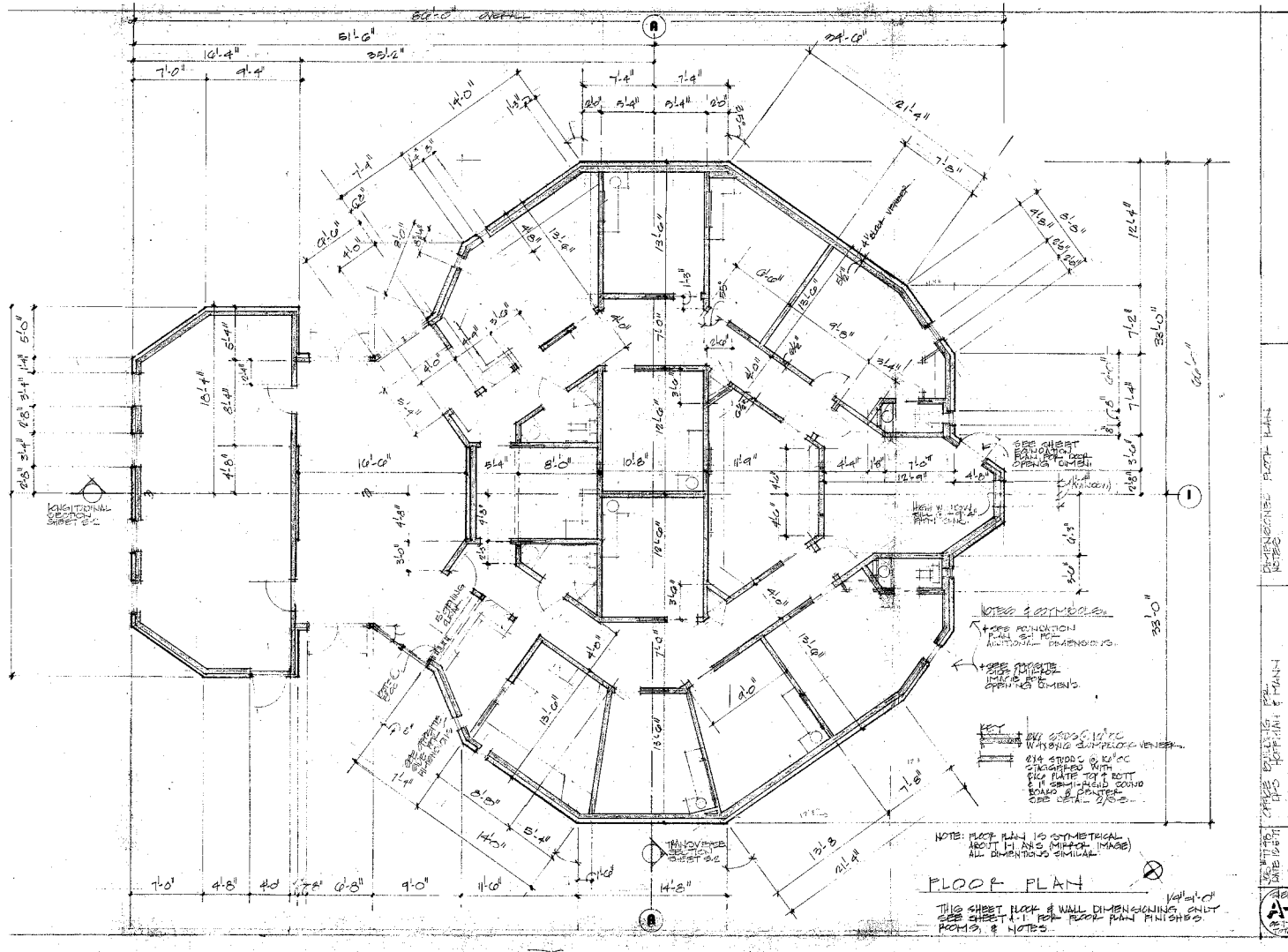
BRE- 01108680



2520 Professional Parkway Santa Maria, CA 93455 • Office: (805) 928-2800 Fax: (805) 349-9375 • www.pacificasantmaria.com

Information contained herein has been obtained from the owner of the property or from other sources deemed reliable. We have no reason to doubt its accuracy, but we do not guarantee it.

224 S. Stratford Ave Floor Plan



Jerry Schmidt

805.928.2800, ext. 107

Jerry@PacificaCRE.com

BRE- 00956042

Mike Kelly

805.928.2800, ext. 113

Mike@PacificaCRE.com

BRE- 01800988

Pat Palangi

805.928.2800, ext. 105

Pat@PacificaCRE.com

BRE- 01108680





Jerry Schmidt

805.928.2800, ext. 107

Jerry@PacificaCRE.com

BRE- 00956042

Mike Kelly

805.928.2800, ext. 113

Mike@PacificaCRE.com

BRE- 01800988

Pat Palangi

805.928.2800, ext. 105

Pat@PacificaCRE.com

BRE- 01108680

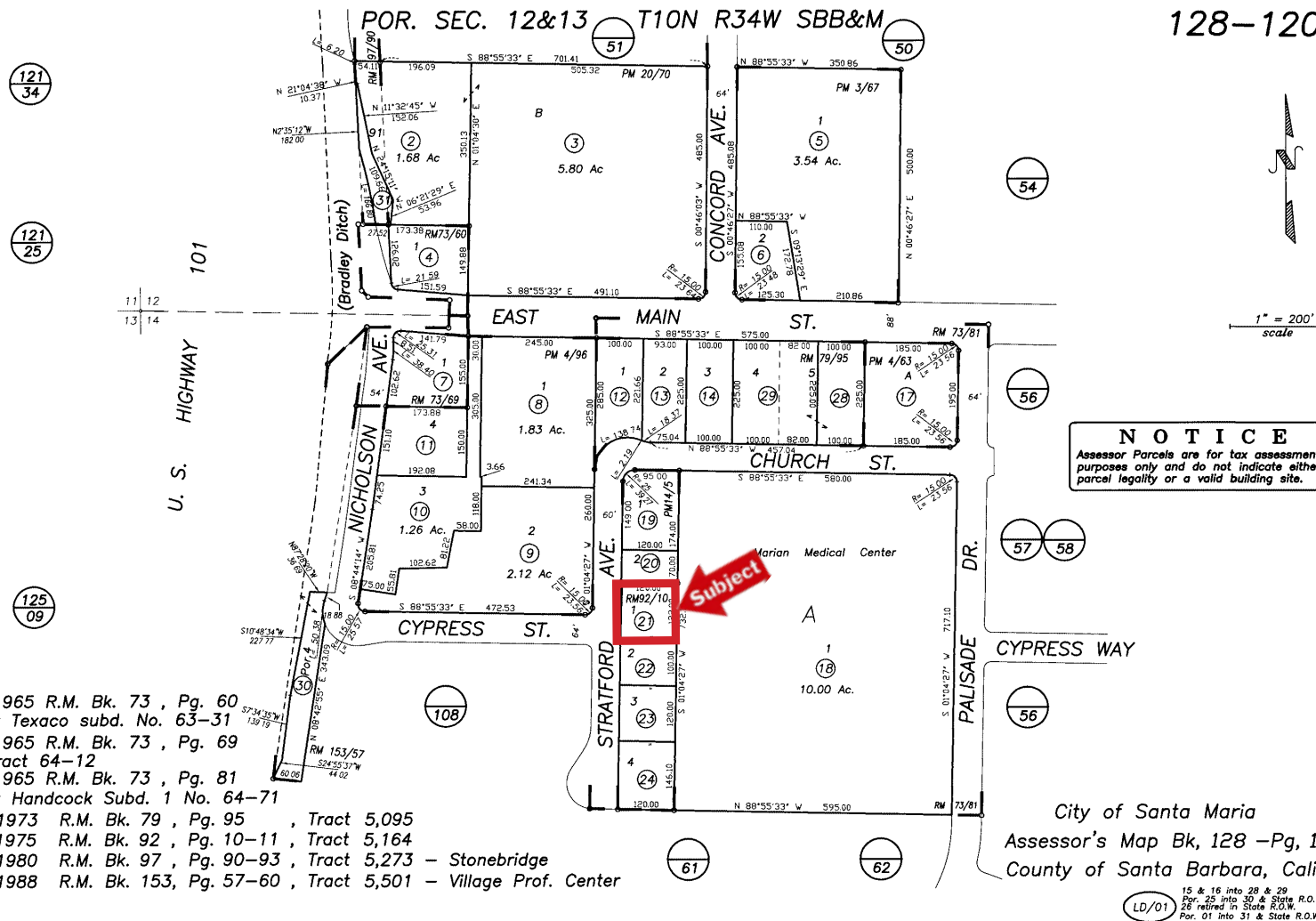


2520 Professional Parkway Santa Maria, CA 93455 • Office: (805) 928-2800 Fax: (805) 349-9375 • www.pacificasantmaria.com

Information contained herein has been obtained from the owner of the property or from other sources deemed reliable. We have no reason to doubt its accuracy, but we do not guarantee it.

Parcel Map

128-120



- 02/05/1965 R.M. Bk. 73 , Pg. 60
Tract Texaco subd. No. 63-31
- 03/17/1965 R.M. Bk. 73 , Pg. 69
Tract 64-12
- 04/08/1965 R.M. Bk. 73 , Pg. 81
Tract Hancock Subd. 1 No. 64-71
- 05/01/1973 R.M. Bk. 79 , Pg. 95 , Tract 5,095
- 10/24/1975 R.M. Bk. 92 , Pg. 10-11 , Tract 5,164
- 03/21/1980 R.M. Bk. 97 , Pg. 90-93 , Tract 5,273 - Stonebridge
- 06/30/1988 R.M. Bk. 153, Pg. 57-60 , Tract 5,501 - Village Prof. Center

Jerry Schmidt

805.928.2800, ext. 107
Jerry@PacificaCRE.com

BRE- 00956042

Mike Kelly

805.928.2800, ext. 113
Mike@PacificaCRE.com

BRE- 01800988

Pat Palangi

805.928.2800, ext. 105
Pat@PacificaCRE.com

BRE- 01108680



2520 Professional Parkway Santa Maria, CA 93455 • Office: (805) 928-2800 Fax: (805) 349-9375 • www.pacificasantmaria.com

Information contained herein has been obtained from the owner of the property or from other sources deemed reliable. We have no reason to doubt its accuracy, but we do not guarantee it.