

# INDUSTRIAL BUILDING FOR SUBLEASE

155 Cuyama Lane, Nipomo, CA



Industrial building with fenced yard area conveniently located at the intersection of Highway 101 and Highway 166. Includes  $\pm$ 30% office with HVAC.



## Lease Details

- Rate: \$7,000.00/Month, Gross
- Term: Through June 30, 2019  
(ask agent regarding longer term)

## Property Details

- Building Size:  $\pm$ 6,000 SF (approximately 30% office)
- Land Size:  $\pm$ 29,000 SF
- Fenced Yard
- HVAC in office area
- APN: 090-302-004; 005



**Mike Kelly**

805.928.2800, ext. 113  
Mike@PacificaCRE.com  
BRE: 01800988

**Jerry Schmidt**

805.928.2800, ext. 107  
Jerry@PacificaCRE.com  
BRE: 00956042

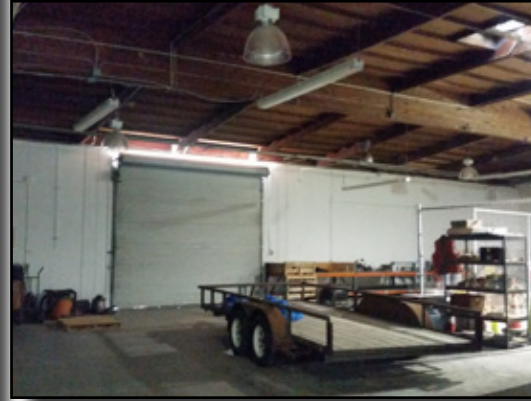
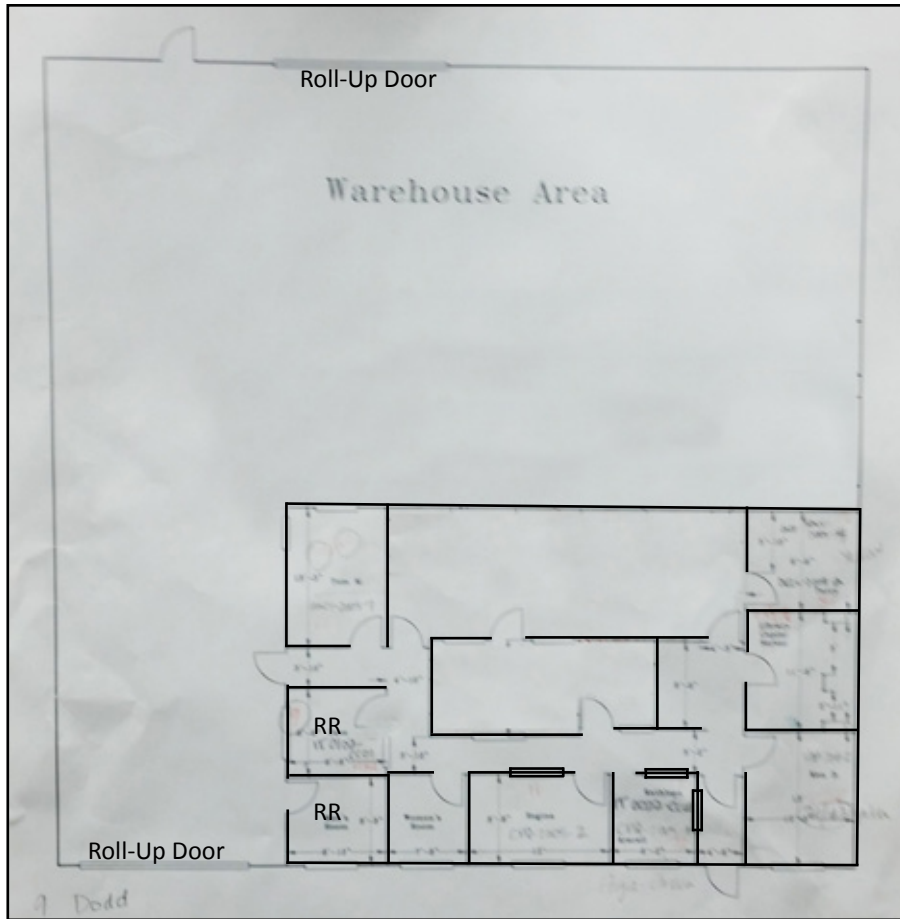
**Pat Palangi**

805.928.2800, ext. 105  
Pat@PacificaCRE.com  
BRE: 01108680

2520 Professional Parkway Santa Maria, CA 93455 • Office: (805) 928-2800 Fax: (805) 349-9375 • [www.pacificasantamaria.com](http://www.pacificasantamaria.com)

Information contained herein has been obtained from the owner of the property or from other sources deemed reliable. We have no reason to doubt its accuracy, but we do not guarantee it.

## Floor Plan



**Mike Kelly**

805.928.2800, ext. 113

Mike@PacificaCRE.com

BRE: 01800988

**Jerry Schmidt**

805.928.2800, ext. 107

Jerry@PacificaCRE.com

BRE: 00956042

**Pat Palangi**

805.928.2800, ext. 105

Pat@PacificaCRE.com

BRE: 01108680

2520 Professional Parkway Santa Maria, CA 93455 • Office: (805) 928-2800 Fax: (805) 349-9375 • [www.pacificasantamaria.com](http://www.pacificasantamaria.com)

Information contained herein has been obtained from the owner of the property or from other sources deemed reliable. We have no reason to doubt its accuracy, but we do not guarantee it.