

# INDUSTRIAL/OFFICE SUITES FOR LEASE

2370 Skyway Drive, Santa Maria, CA



## Property Details

- Building Size: ±14,000 SF
- Land Area: ±0.98 Acres (±42,636 SF)
- Zoning: PD-M1 (Light Manufacturing)
- Parking: Private Lot
- APN: 111-051-024

## Available Spaces

Suite	Square Footage	Monthly Rate
Suite 102	±3,500 SF	\$1.25/SF Gross
Suite 203 (upstairs)	±1,950 SF	\$1.25/SF Gross

Recently constructed “flex” office building at the high traffic intersection of Skyway Drive and McCoy Lane. This two-story building is currently divided into four (4) separate suites with one suite leased and two others in “turn-key” condition and ready for immediate occupancy. Landlord is in the process of building out the fourth suite. Each suite has it’s own storage area accessible by a roll-up door that can be utilized for parking or other uses.



**Mike Kelly**

805.928.2800, ext. 113  
Mike@PacificaCRE.com  
BRE#01800988

**Pat Palangi**

805.928.2800, ext. 105  
Pat@PacificaCRE.com  
BRE#01108680

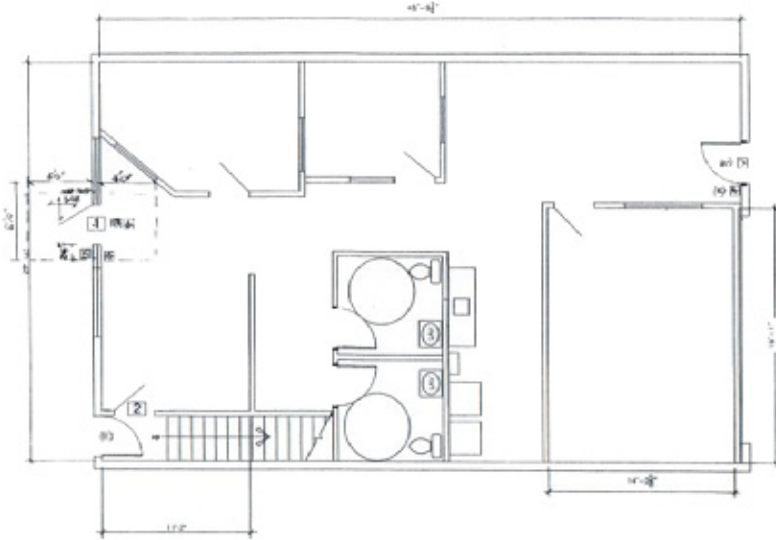
**Jerry Schmidt**

805.928.2800, ext. 107  
Jerry@PacificaCRE.com  
BRE#00956042

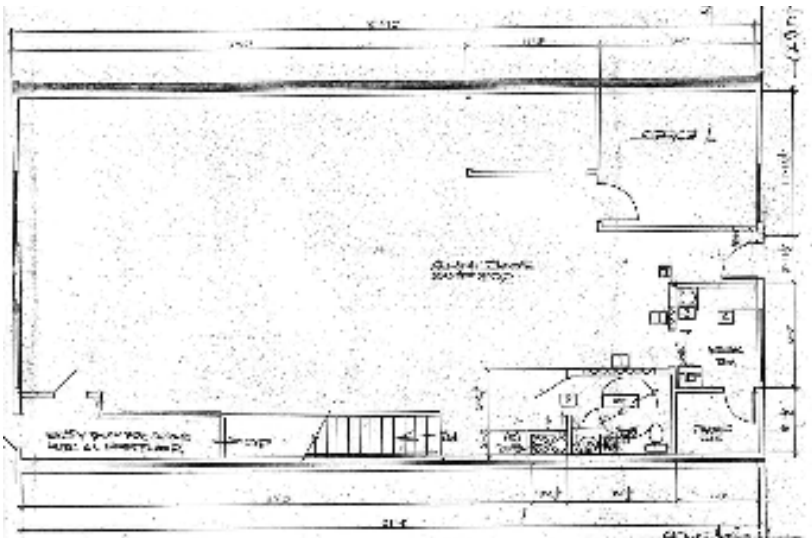
2520 Professional Parkway Santa Maria, CA 93455 • Office: (805) 928-2800 Fax: (805) 349-9375 • [www.pacificasantamaria.com](http://www.pacificasantamaria.com)

Information contained herein has been obtained from the owner of the property or from other sources deemed reliable. We have no reason to doubt its accuracy, but we do not guarantee it.

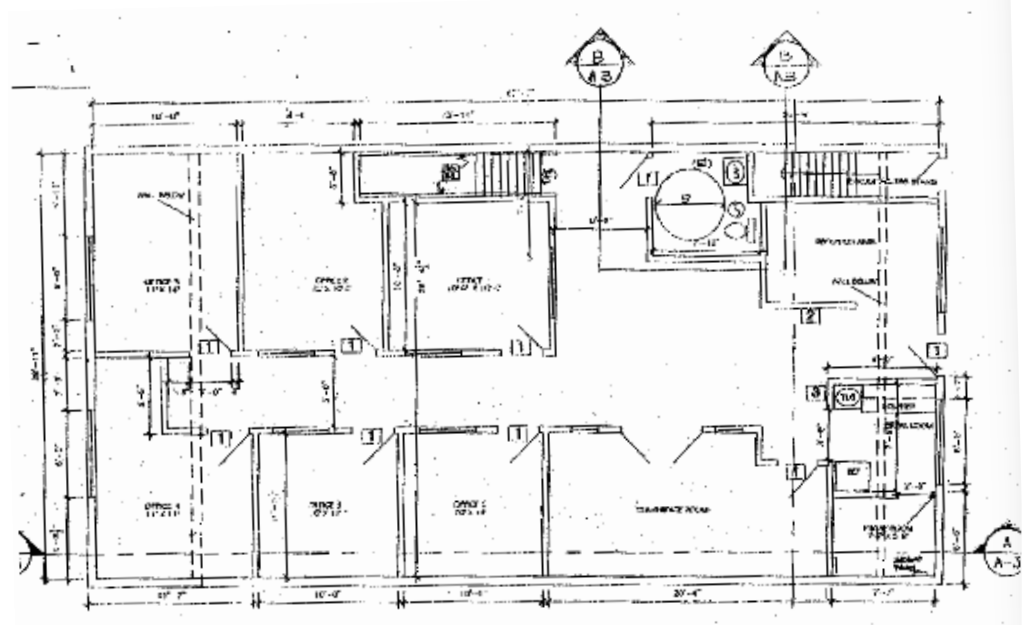
Suite 102 (downstairs)  
±1,550 SF



Suite 102 (upstairs)  
±1,950 SF



Proposed Suite. 203 (upstairs)  
±1,950 SF



**Jerry Schmidt**

805.928.2800, ext. 107

Jerry@PacificaCRE.com

BRE#00956042

**Pat Palangi**

805.928.2800, ext. 105

Pat@PacificaCRE.com

BRE#01108680

**Mike Kelly**

805.928.2800, ext. 113

Mike@PacificaCRE.com

BRE#01800988

2520 Professional Parkway Santa Maria, CA 93455 • Office: (805) 928-2800 Fax: (805) 349-9375 • [www.pacificasantamaria.com](http://www.pacificasantamaria.com)

Information contained herein has been obtained from the owner of the property or from other sources deemed reliable. We have no reason to doubt its accuracy, but we do not guarantee it.