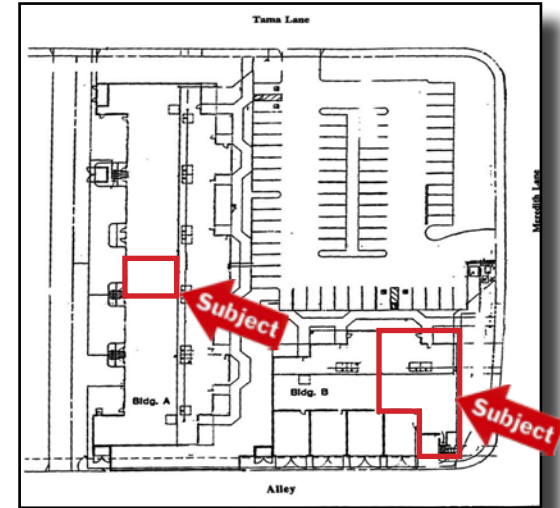


INDUSTRIAL SPACE FOR LEASE

2315 Meredith Lane
Santa Maria, CA



Well-maintained industrial units in busy Santa Maria Airport area. Centrally located industrial complex in easily accessible location. Units feature office area, roll-up door, H/C restroom, and some with yard area.



Property Details

- Suites
 - M/N: $\pm 3,264$ SF @ \$0.75, NNN
 - H: $\pm 1,440$ SF @ \$0.80, NNN
- Year Built: 1987
- Parking: 2.5/1,000 SF
- Roll-up Doors: 10' x 12'
- Construction: Split Faced Block
- Restrooms: Two
- HVAC
- Sprinklered
- Handicap Access
- Zoning: PD-M1

Jerry Schmidt

(805)928-2800 ext. 107
Jerry@PacificaCRE.com
BRE: 00956042

Pat Palangi

(805)928-2800 ext. 105
Pat@PacificaCRE.com
BRE: 01108680

Mike Kelly

(805)928-2800 ext. 113
Mike@PacificaCRE.com
BRE: 01800988



2520 Professional Parkway Santa Maria, CA 93455 • Office: (805) 928-2800 Fax: (805) 349-9375 • www.PacificaSantaMaria.com

Information contained herein has been obtained from the owner of the property or from other sources deemed reliable. We have no reason to doubt its accuracy, but we do not guarantee it.