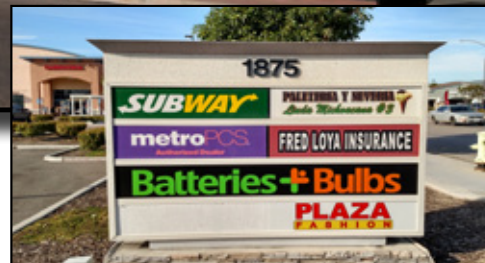


RETAIL SPACE FOR LEASE

1811 - 1835 N. Broadway

Santa Maria, California



Lease Details:

- Lease Rate: \$1.75/SF/Mo. NNN
- Term: 3-5 Years
- NNN: ± \$0.54/sf/Mo.

Property Details:

- Size: (1) ±1,210 SF
- Zoning: PD-C2 (Planned Development/General Commercial)
- Traffic Counts: 22,000 ADT (North Broadway)
- Parking: Per City Code

Highly visible pad spaces in the “Vallarta” supermarket anchored shopping center. Come join “Subway,” “Batteries Plus” and “Metro PCS” at this dynamic north Santa Maria location. Excellent signage opportunity on both the front and backside of the building to take advantage of the high traffic counts on North Broadway. Site plan on reverse.

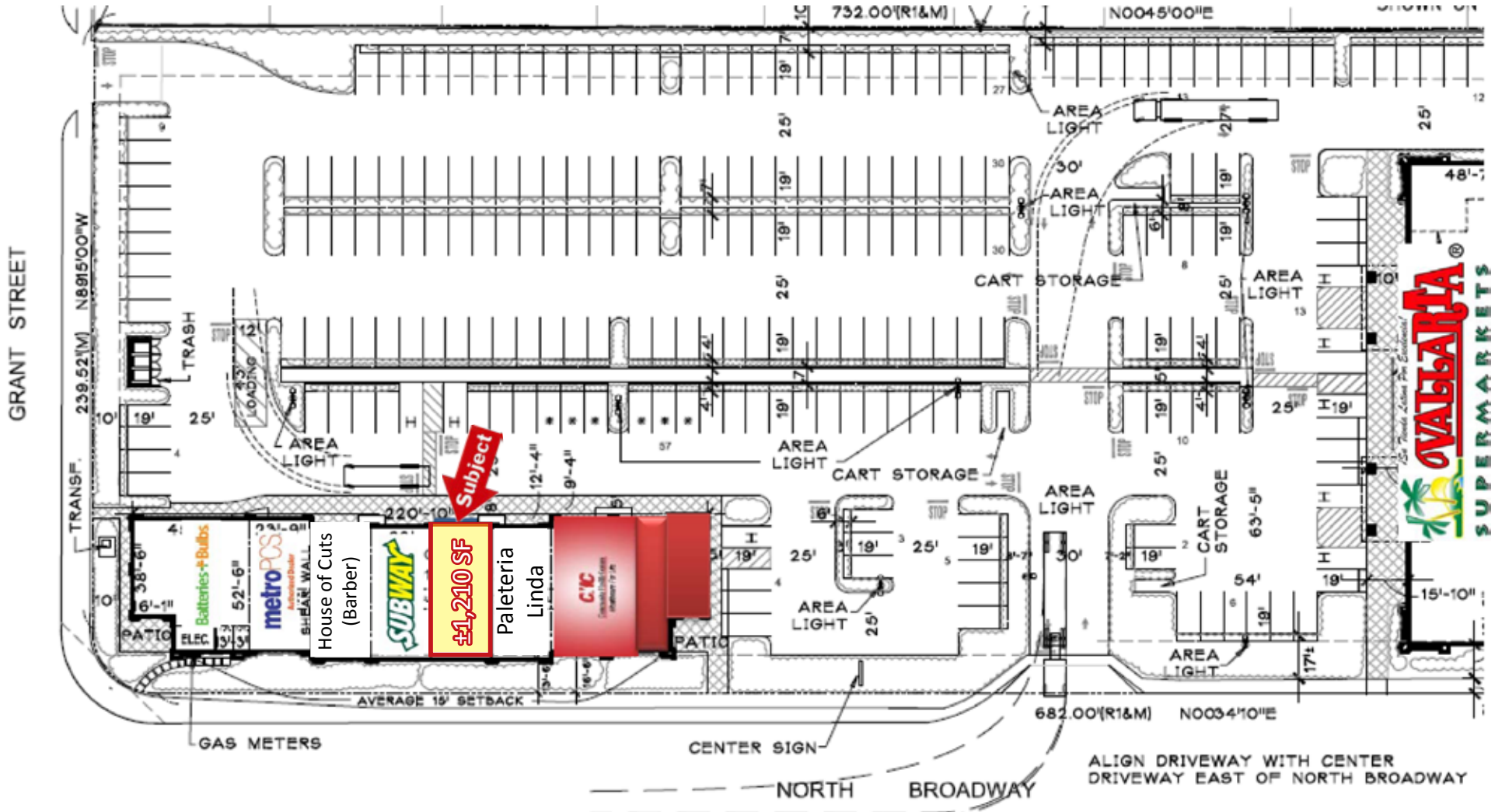


Brian LaCabe
805.928.2800, ext. 103
BLacabe@PacificaCRE.com
BRE# 01026699

2520 Professional Parkway Santa Maria, CA 93455 • Office: (805) 928-2800 Fax: (805) 349-9375 • www.pacificasantamaria.com

Information contained herein has been obtained from the owner of the property or from other sources deemed reliable. We have no reason to doubt its accuracy, but we do not guarantee it.

1811-1835 N. Broadway
Site Map



Brian LaCabe
805.928.2800, ext. 103
BLacabe@PacificaCRE.com
BRE# 01026699

2520 Professional Parkway Santa Maria, CA 93455 • Office: (805) 928-2800 Fax: (805) 349-9375 • www.pacificasantamaria.com

Information contained herein has been obtained from the owner of the property or from other sources deemed reliable. We have no reason to doubt its accuracy, but we do not guarantee it.