

OFFICE SPACE FOR LEASE

CARMEN CENTER

124 W. Carmen Lane, Santa Maria



Professional office centrally located one block north of the South Broadway/Betteravia intersection in Santa Maria. Easy access to U.S. Highway 101. Pleasant curb appeal. Nicely maintained grounds and common areas.



Property Details

- Suites Sizes:
 - Suite D: $\pm 1,050$ SF
 - Suite E: $\pm 1,185$ SF
- Lease Rate: \$1.25/SF, GR
- Term: Minimum 3 Years
- Restrooms: 1M/1F - Common, ADA
- Reception Area
- HVAC
- Sprinklered
- Handicap Access
- Parking: 4/1,000 SF
- Zoning: PD/C-2

Mike Kelly

805.928.2800, ext. 113

Mike@PacificaCRE.com

BRE# 01800988

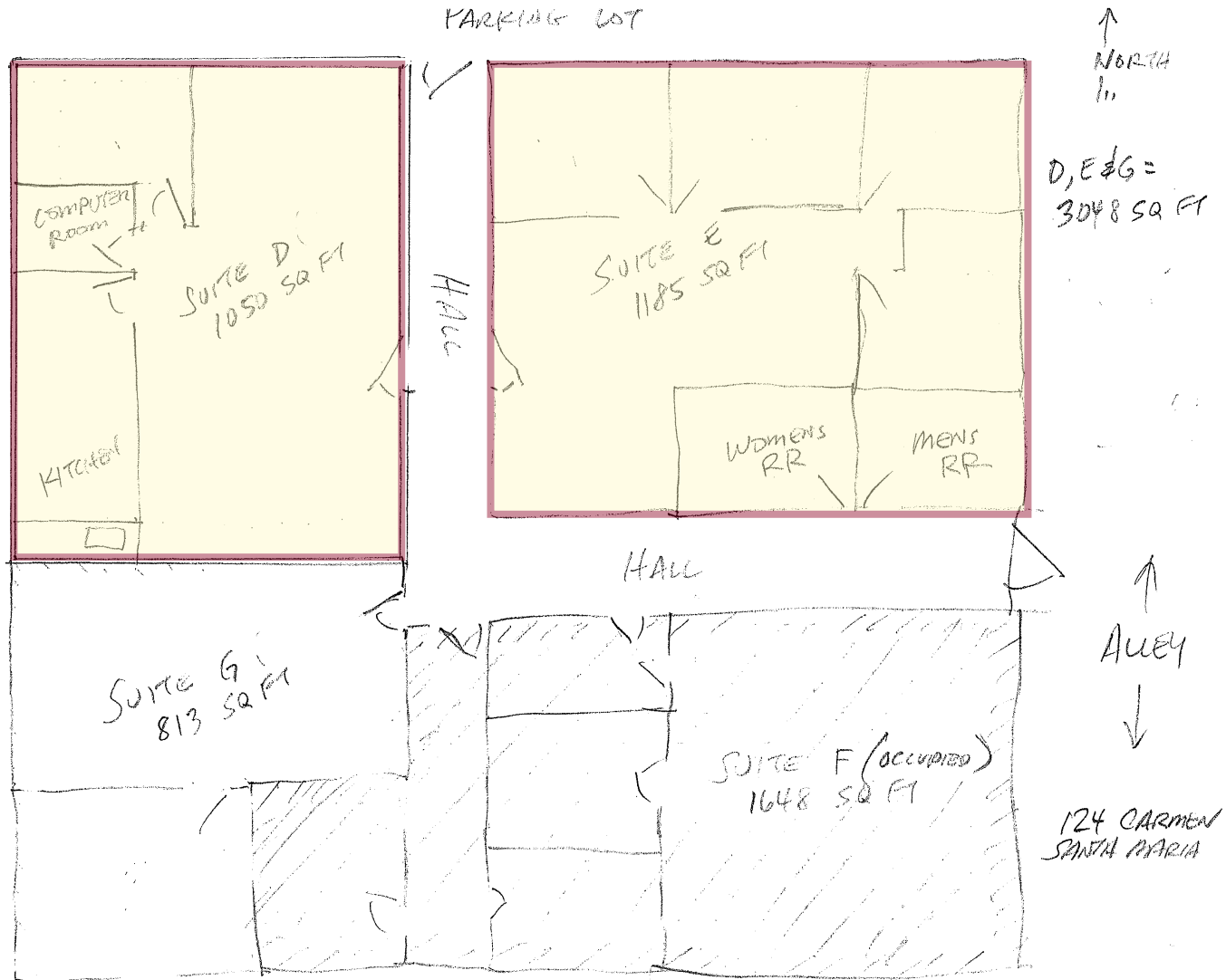


PACIFICA
COMMERCIAL REALTY

2520 Professional Parkway
Santa Maria, CA 93455
(805) 928-2800 Fax: (805) 349-9375
www.pacificasantamaria.com

Information contained herein has been obtained from the owner of the property or from other sources deemed reliable. We have no reason to doubt its accuracy, but we do not guarantee it.

124 West Carmen
Floor Plan



Mike Kelly

805.928.2800, ext. 113

Mike@PacificaCRE.com

BRE# 01800988



PACIFICA
COMMERCIAL REALTY

2520 Professional Parkway
Santa Maria, CA 93455
(805) 928-2800 Fax: (805) 349-9375
www.pacificasantamaria.com

Information contained herein has been obtained from the owner of the property or from other sources deemed reliable. We have no reason to doubt its accuracy, but we do not guarantee it.