

# OFFICE SPACE FOR LEASE

2529 Professional Parkway, Suite A  
Santa Maria, California



Rare opportunity for an excellent professional office space in desirable business corridor. Easy access to downtown and to Hwy 101. Efficient layout includes conference room, large executive offices, and work area. Great layout (see floor plan on back).

## **Property Details**

- 2,350 Square Feet
- A/C-Heating: Yes
- Restrooms: Yes
- Parking: Per City Code
- APN: 111-550-037
- Zoning: CPO-PD
- \$1.30/SF/Month, NNN

**Chris Garner**

**805.928.2800**

**CGarner@PacificaCRE.com**



**PACIFICA**  
COMMERCIAL REALTY

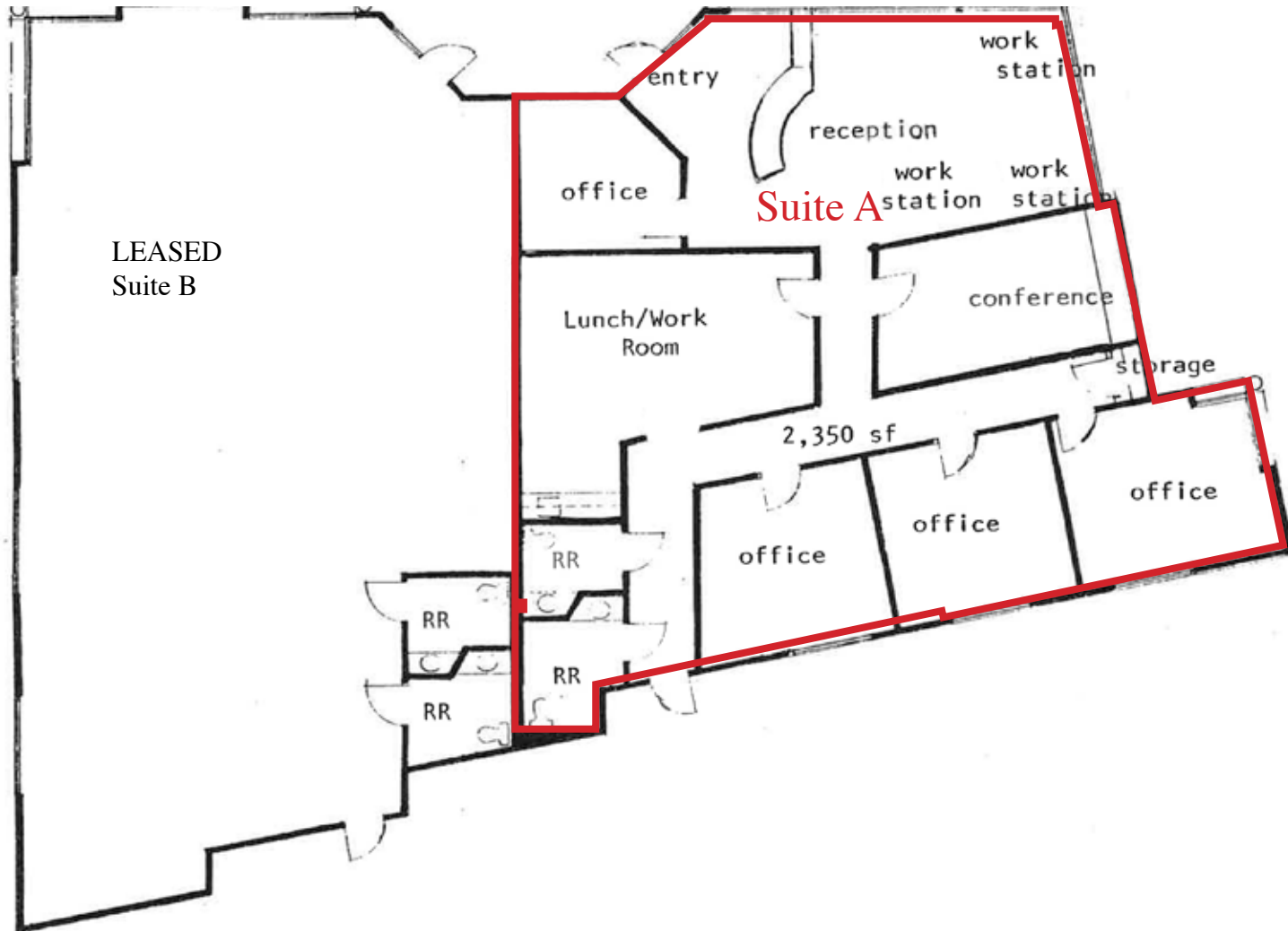
2520 Professional Parkway  
Santa Maria, CA 93455

**(805)928-2800** Fax: (805) 349-9375

[www.PacificaSantaMaria.com](http://www.PacificaSantaMaria.com)

Information contained herein has been obtained from the owner of the property or from other sources deemed reliable. We have no reason to doubt its accuracy, but we do not guarantee it.

2529 Professional Parkway  
Santa Maria, CA  
Floor Plan



**Chris Garner**

**805.928.2800**

**CGarner@PacificaCRE.com**