

OFFICE SUITES FOR LEASE

218-222 W. Carmen Lane, Santa Maria



Professional office project in central Santa Maria location. Various floor plans and sizes available. Two story building with handicap accessible elevators, ample parking, courtyard with fountain and lush landscaping, vending facilities, and VERY competitive rates.



Lease Information:

- Lease Rate: Starting at \$1.10/SF
- Lease Type: NNN
- Lease Term: 3-5 Years
- Tenant Pays Utilities

Building Information:

- Building Size: Approximately 25,000 SF
- Suite Sizes: Range from 624-1,350 SF
- Construction Type: Frame/Stucco
- Year Built: 1982, Remodeled in 2006
- Zoning: PD C-2
- Two Floors
- Handicap Accessible Elevators
- Restrooms: Private & Common, (HC Access)
- Partially Sprinklered
- 100% HVAC
- Parking: 144 Total Spaces (4/1,000 SF)

**COOPERATING
BROKER BONUS!**

Call Mike for details



Mike Kelly
805.928.2800, ext. 113
MKelly@PacificaRealEstate.com
BRE# 01800988

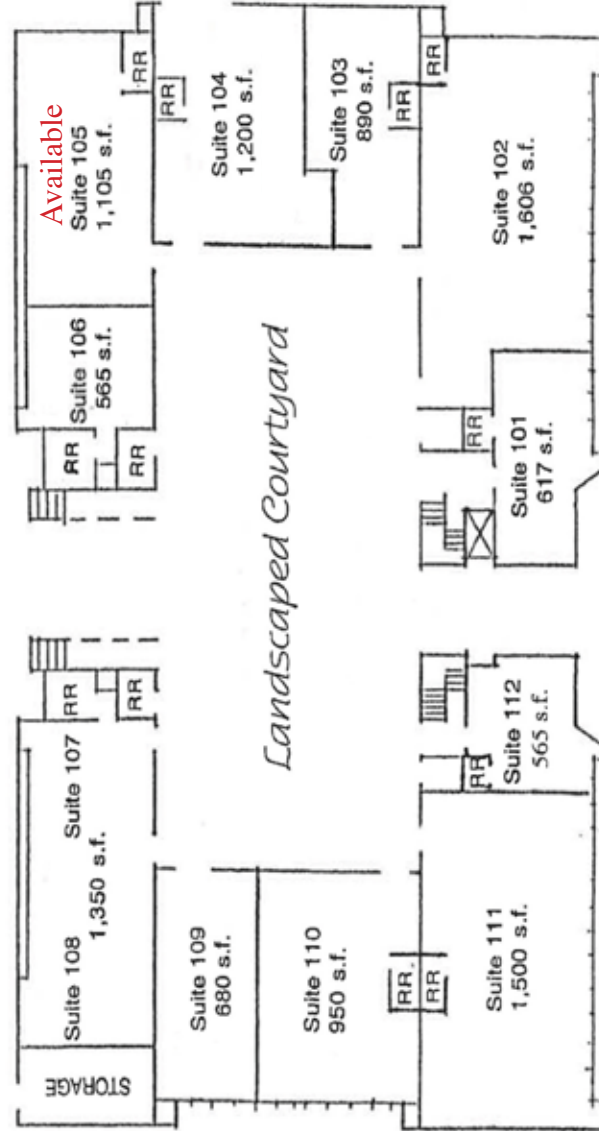
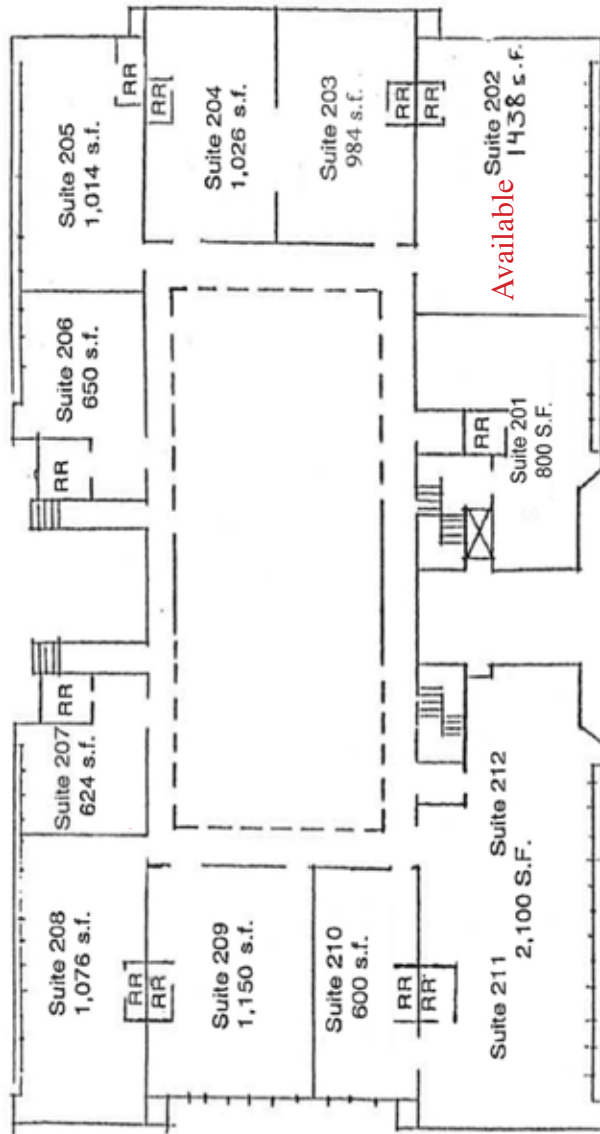
2520 Professional Parkway Santa Maria, CA 93455 • Office: (805) 928-2800 Fax: (805) 349-9375 • www.PacificaSantaMaria.com

Information contained herein has been obtained from the owner of the property or from other sources deemed reliable. We have no reason to doubt its accuracy, but we do not guarantee it.



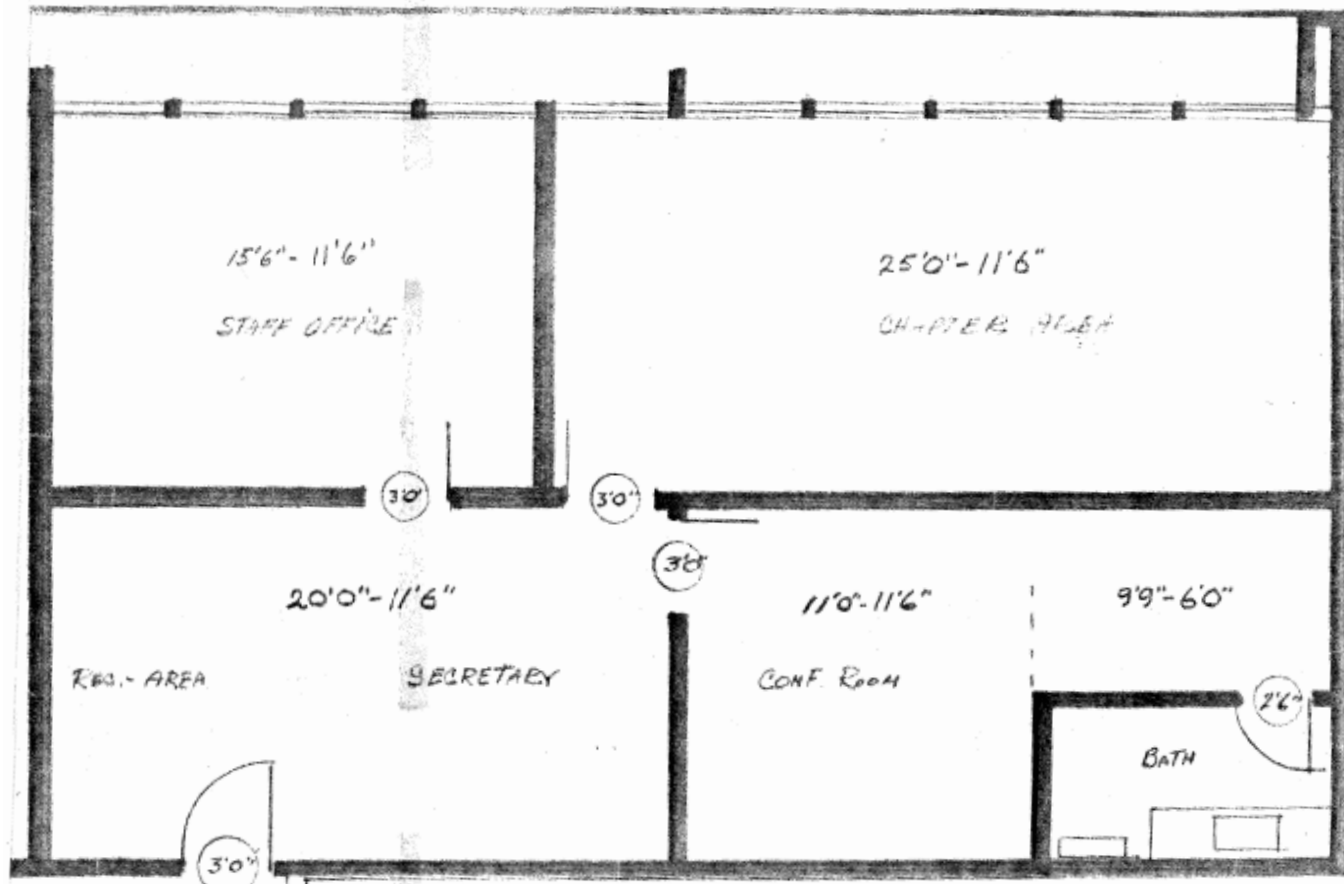
PACIFICA
COMMERCIAL REALTY

Carmen Professional Center
218 - 222 West Carmen Lane, Santa Maria, California



Site Plan
(Not to Scale or Proportion)

218-222 Carmen Lane, Ste. 105
Floor Plan



2520 Professional Parkway Santa Maria, CA 93455 • Office: (805) 928-2800 Fax: (805) 349-9375 • www.PacificaSantaMaria.com

Information contained herein has been obtained from the owner of the property or from other sources deemed reliable. We have no reason to doubt its accuracy, but we do not guarantee it.