

# MEDICAL SPACE FOR LEASE

116 South Palisade Drive  
Santa Maria, California

*Marian Hancock Medical Building*



## Lease Details

- Lease Rate: \$1.65/ RSF/ MO, NNN
- Term: 5 years

## Space Available

- Suite 208: +/- 4,446 RSF
  - Suite 210: +/- 1,884 RSF
  - Suite 304: +/- 1,540 RSF
  - Suite 306: +/- 1,755 RSF
- Contiguous space +/-3,295 RSF  
or +/-6,330 RSF

## Contact:

**Jerry Schmidt**

**805.928.2800, ext. 107**

**Jerry@PacificaCRE.com**

**BRE# 00956042**

**OR**

**Mike Kelly**

**805.928.2800, ext. 113**

**Mike@PacificaCRE.com**

**BRE# 01800988**

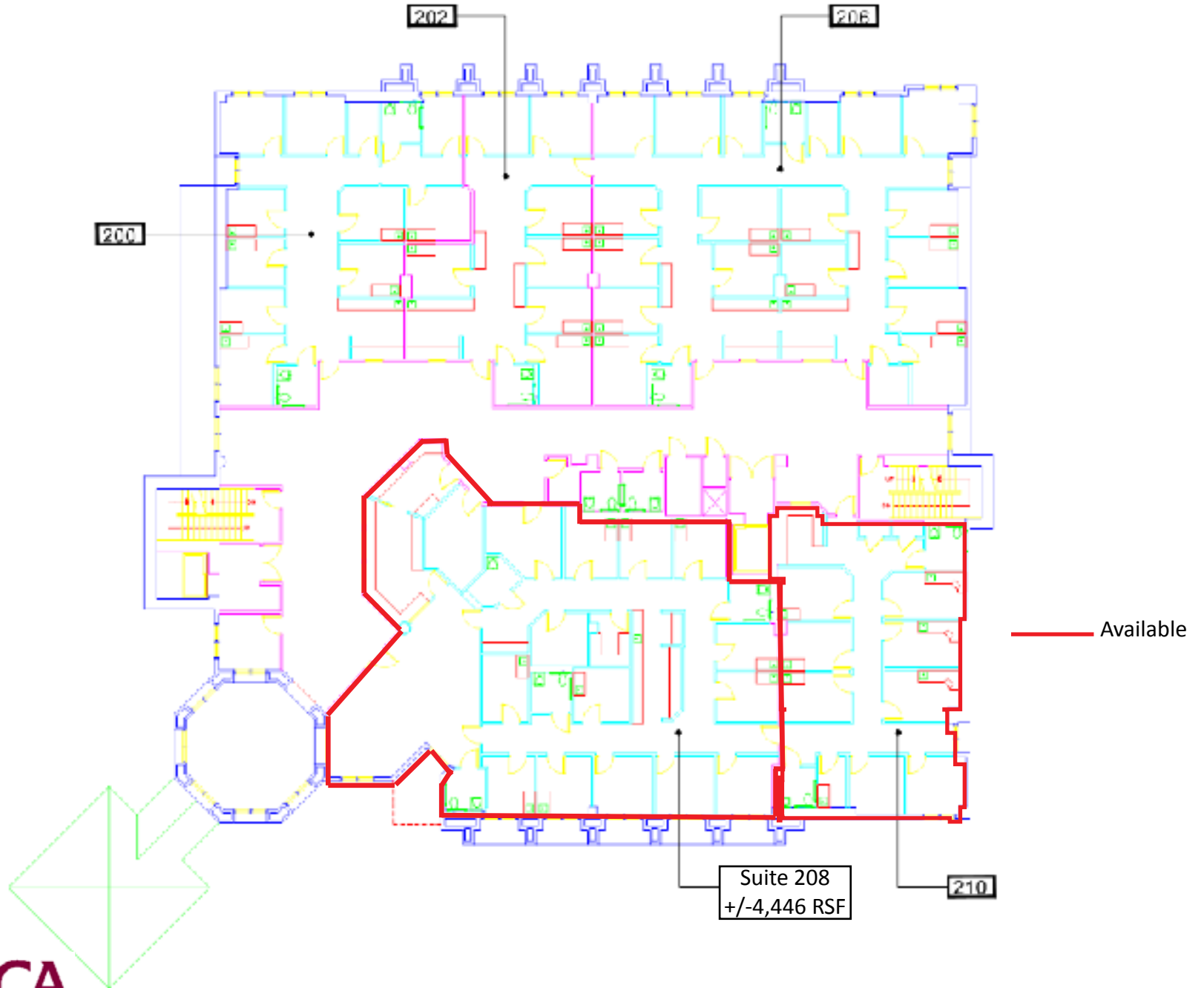
Prime medical space available in the Marian Hancock Medical Building. In short walking distance to Marian Medical Center.



2520 Professional Parkway  
Santa Maria, CA 93455  
**(805) 928-2800** Fax: (805) 349-9375  
www.pacificasantamaria.com

Information contained herein has been obtained from the owner of the property or from other sources deemed reliable. We have no reason to doubt its accuracy, but we do not guarantee it.

Marian Hancock Medical Building  
116 South Palisade Drive, Suites  
Santa Maria, CA 93454  
Second Floor



Marian Hancock Medical Building  
116 South Palisade Drive, Suites  
Santa Maria, CA 93454  
Third Floor

