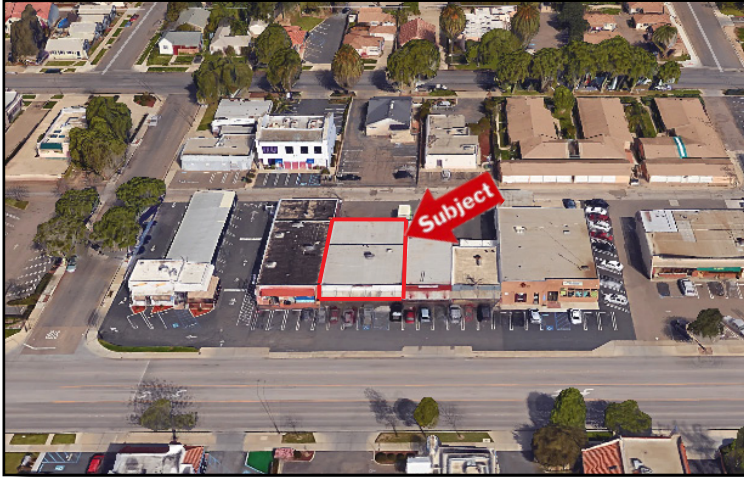


RETAIL SHOP SPACE FOR SALE

611 & 613 East Main Street, Santa Maria, CA



Sale Details

- Sale Price: \$600,000.00 (\$150 Per SF)
- Cap Rate: 4.75% (actual)
- Cap Rate: 5.5% (projected 2016)

Property Details

- Size: +/-4,000 SF

Approximately 4,000 SF of “leased” in-line retail shop space for sale. Located along the desirable East Main Street, retail and office corridor. Currently leased to Santa Barbara Family Care Center until July 1, 2016. The current tenant has a three year Lease Option, if exercised. Current rent \$2,950.00 per month Gross. Very attractive shop space. Front parking lot has been recently slurred and restriped for parking.

Gerald Jankowski
(805)928-2800 ext. 106
GJankowski@PacificaRealEstate.
BRE#00791658

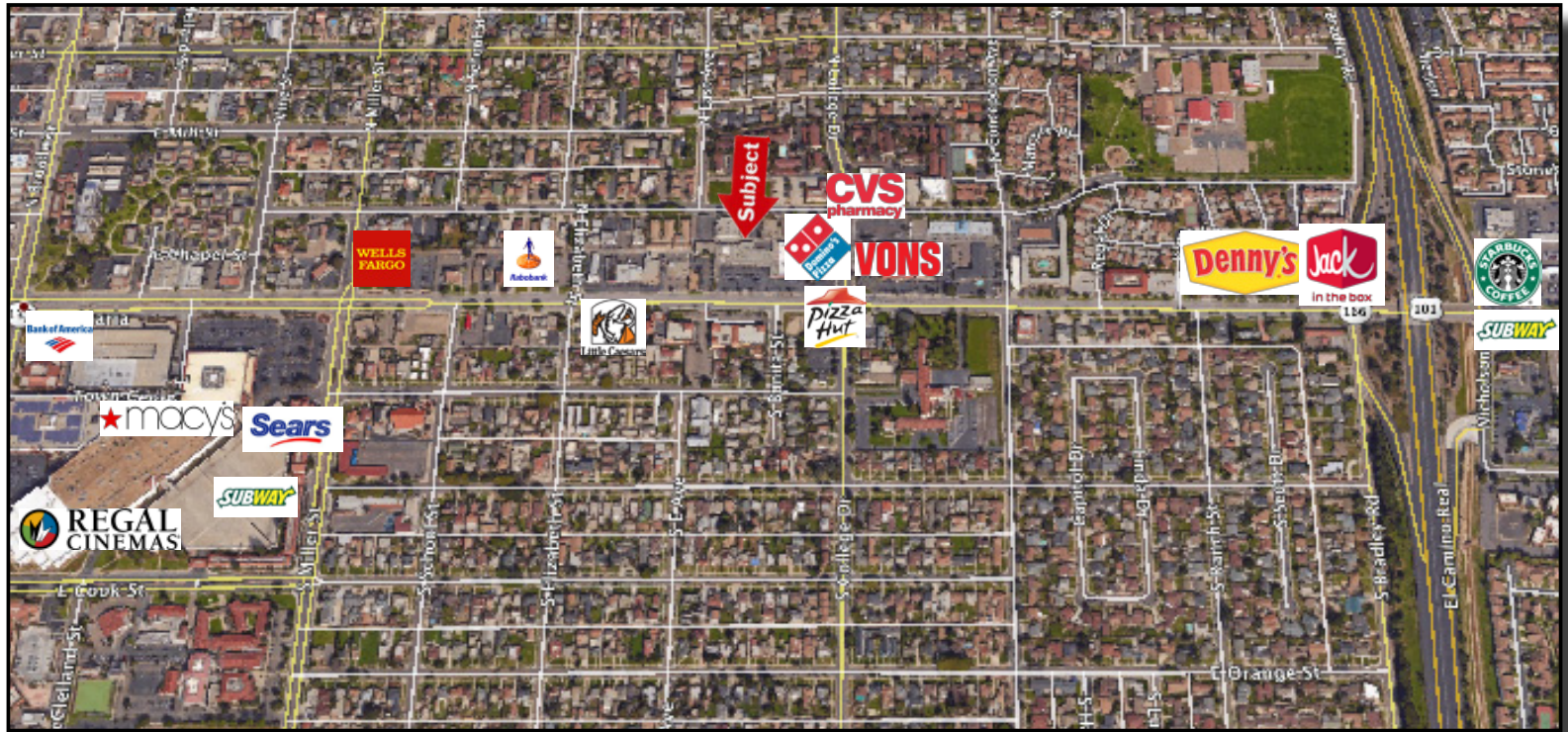


2520 Professional Parkway, Santa Maria, CA 93458 • Office: (805) 928-2800 Fax: (805) 349-9375 • www.PacificaSantaMaria.com

Information contained herein has been obtained from the owner of the property or from other sources deemed reliable. We have no reason to doubt its accuracy, but we do not guarantee it.

Merchant Aerial

611-613 East Main Street, Santa Maria, CA



Gerald Jankowski
(805)928-2800 ext. 106
GJankowski@PacificaRealEstate.

2520 Professional Parkway, Santa Maria, CA 93458 • Office: (805) 928-2800 Fax: (805) 349-9375 • www.PacificaSantaMaria.com

Information contained herein has been obtained from the owner of the property or from other sources deemed reliable. We have no reason to doubt its accuracy, but we do not guarantee it.